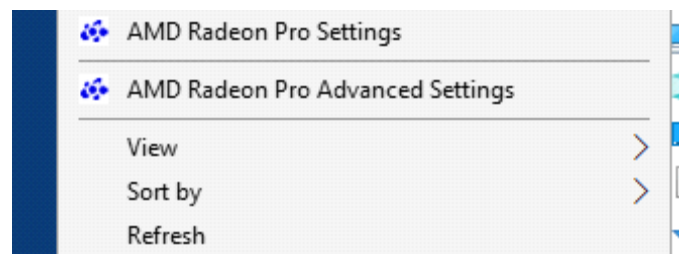


**The MotionMonitor xGen Hardware Guide:
Setting up Computer and Canon Stereoscopic Projector
(Model LV-WX300UST) for virtual reality data collection using
an AMD graphics card with stereoscopic support:**

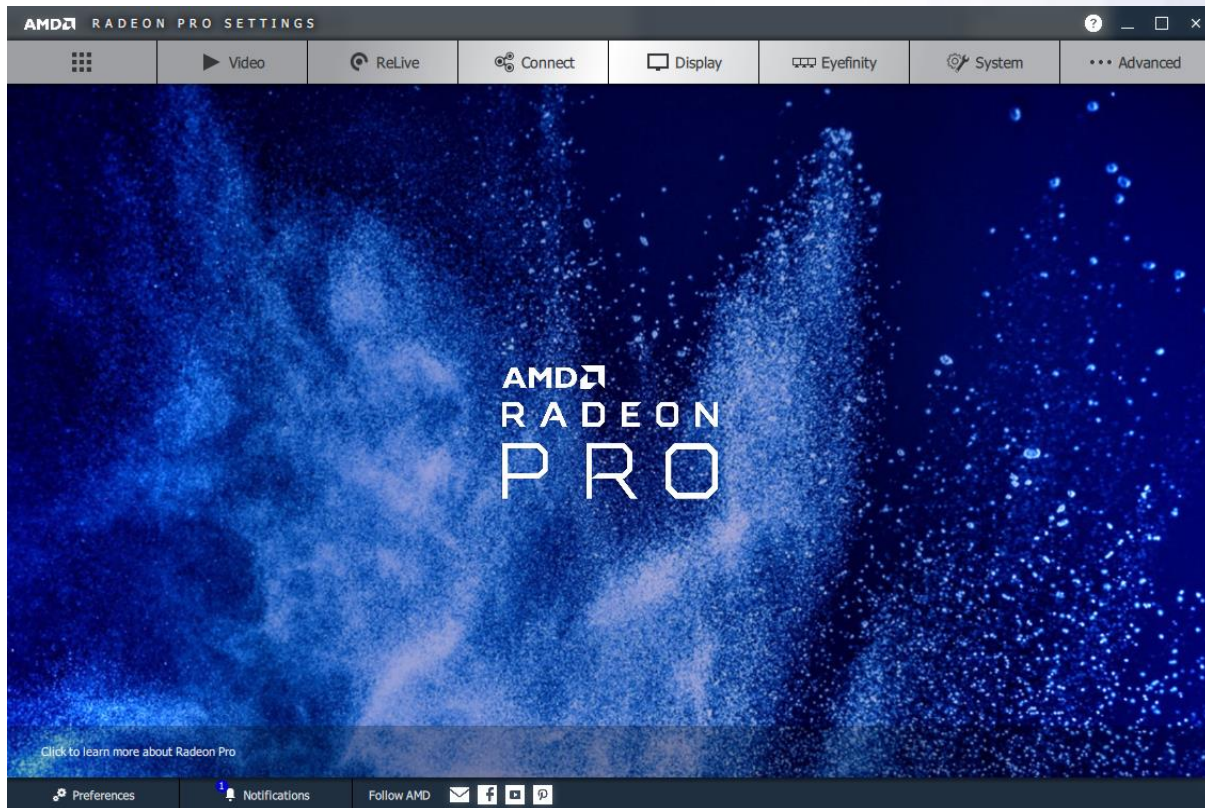
Revised (11/22/2019)- JTS

The following is a guide for a common menu sequence for setting up the computer and projector for a virtual reality data collection:

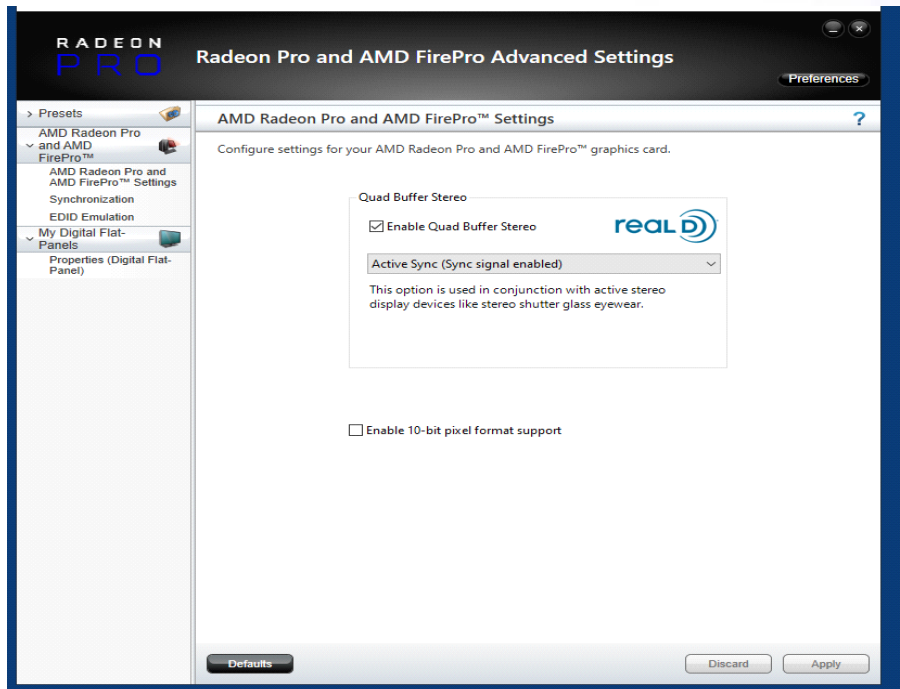
- Power on computer and computer monitor (Display 1).
- Power on the Canon stereoscopic projector. Ensure projector is connected to HDMI 1 and going to Display port 2 on Computer graphics card (Display 2). Wait for the projector to be recognized by the computer.
- Restart the computer (To successfully run stereoscopic applications the computer must be restarted any time the projector is power cycled or disconnected/reconnected)
- Right Click on Desktop and go to AMD Radeon Pro Settings



- Click on the Applications button in the upper left hand corner



- Click 'Global Settings' and enable 'Open GL Triple Buffering' & set 'Wait for Vertical Refresh' to Always on.
- Close the AMD Radeon Pro Settings dialog.
- right-click on the Desktop and select “AMD Radeon Pro Advanced settings”.
- Enable Quad Buffer Stereo. Select Active Sync(Sync Signal Enabled)



- Note: Resolution for the Computer monitor (Display 1) should be 1920x1200 and should run at 60Hz. (Desktop->Display Settings->Advanced Display Settings)
The resolution for the projector should be 1280x800 and should run at 60Hz.
- On the projector hardware, use the included remote to enable 3D with the following sequence:
- Click Menu and select “Installation II”
- Select “Advanced”
- Select “3D”
 - Enable 3D: “IR”
 - Enable 3D Format: “Frame Sequential”
- If, when running the VR application the Displays flash black/momentarily go blank, the projector Advanced VR settings will need to be reapplied.